

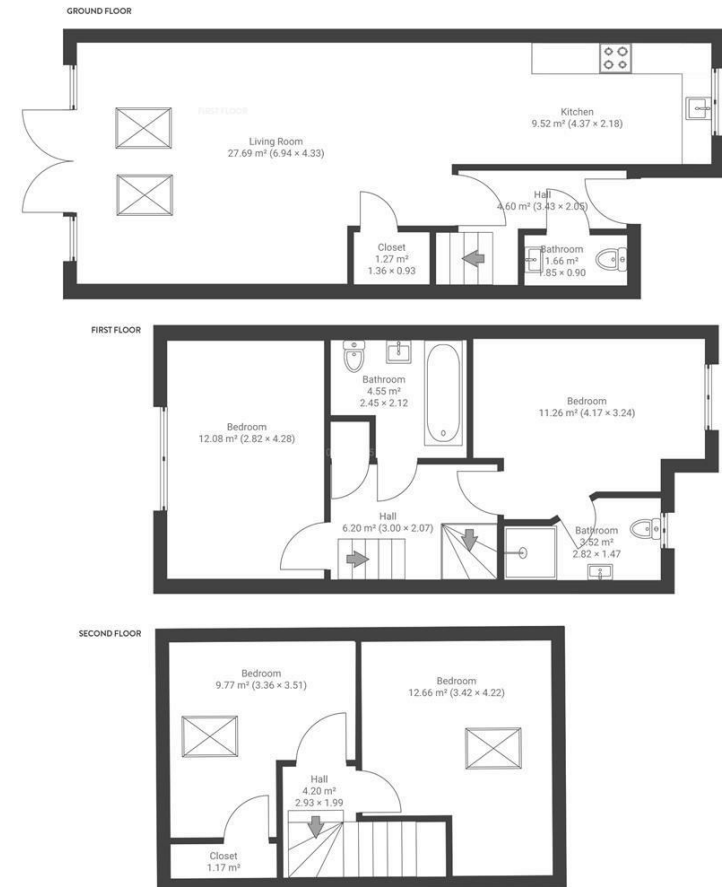
Boardwalk

Redcatch Road

KNOWLE, BRISTOL

Axbridge Terrace KNOWLE

APPROXIMATE FLOOR AREA
115.3 SQM / 1241 SQFT



Boardwalk

Redcatch Road

KNOWLE, BRISTOL



£445,000



BS4 2AF



4 Bedrooms



3 Bathrooms

"We have loved living in this house for the last 8 years. It's been the perfect house to have a young family in because it has a generous number of bedrooms and bathrooms to grow into, as well as a private driveway which is unusual for the area. The location has to be one of our favourite things about the house - we love the balance of being within a few minutes walk of some incredible green spaces like Redcatch, Victoria and Perrett's Park - whilst also being within walking distance of Temple Meads station and the city centre. As a modern home, we've found ourselves very grateful for how low maintenance, warm and cost-effective it is to run. Having a south facing garden and living room is a real highlight - on sunny days the house is flooded with light, and we throw open the french doors to enjoy the garden deck."

